



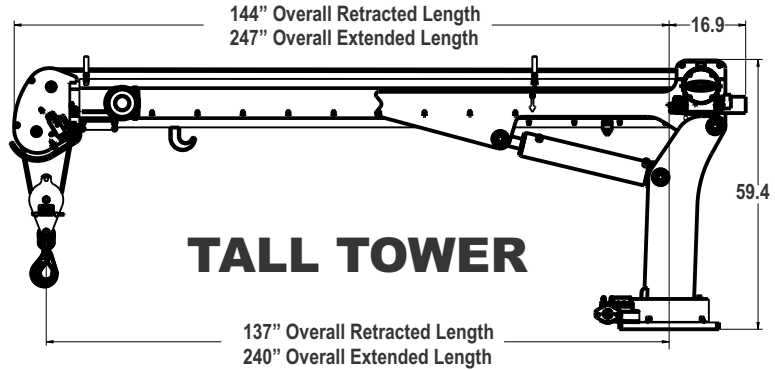
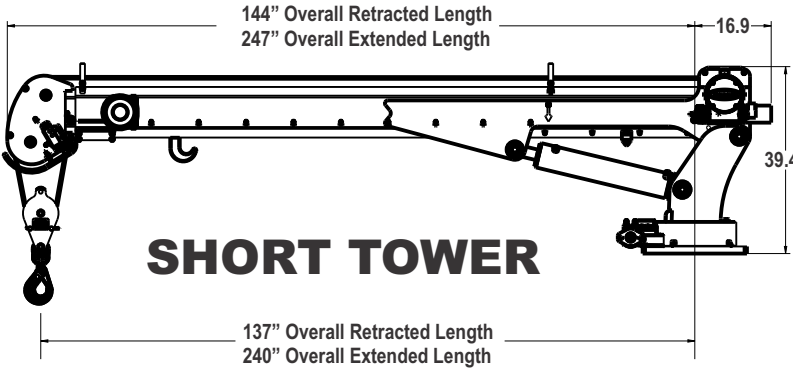
**Maintainer**

# H6520 CRANE



THIS EQUIPMENT  
WITHIN 10 FEET OF  
HIGH VOLTAGE LINES OF  
50,000 VOLTS OR LESS

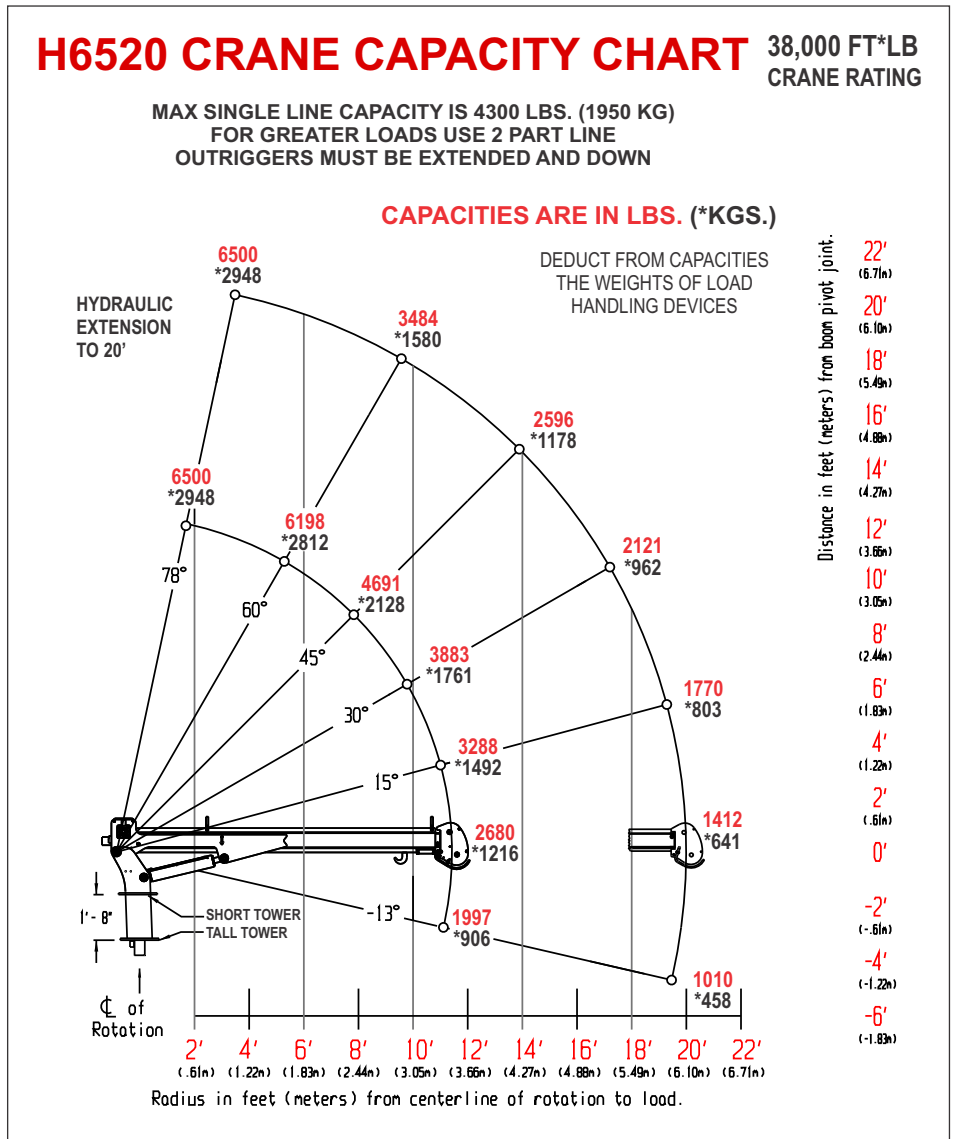
# specifications



## features:

- “Boom Mounted” Gear Winch - 30 fpm
- Dual Part Line (Single Part Capable)
- Weight—1,600 lb.
- Total Operational Range 91° (-13 to +78)
- Double Sheave Design
- Anti-Two Block Relocation (Inboard)
- Wireless Remote Control System
- 105 ft. of 3/8 in dia. Steel Cable
- 615° Rotation
- 20 ft. Hydraulic Reach
- Hexagonal Boom
- Tall and Short Tower Configurations
- Closed-center/Load-sensing Hydraulic System
- OSHA 1910.180 / ANSI B30.5 Compliant

## ratings:



## options:

- Advanced Crane Control
- Open-center Hydraulic System
- Planetary Winch - 60 fpm